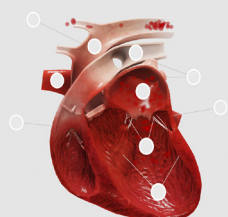


Show the progression and
strengthen the explanation with



Dechra's 4D Models

NEW!



1 Stage A Stage B Stage C Stage D

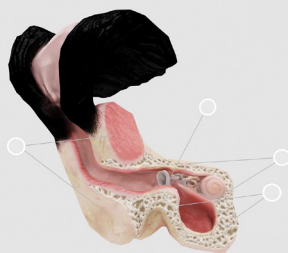
4D Canine Heart Model

Dechra is excited to launch the innovative 4D heart model. Help pet owners see what you are treating by showing what's happening inside the heart with clear, interactive visuals and help demonstrate MMVD progression in a way that owners can see and understand.



Scan Me

Dechra



1 Healthy Ear Mild Otitis Moderate Otitis Severe Otitis

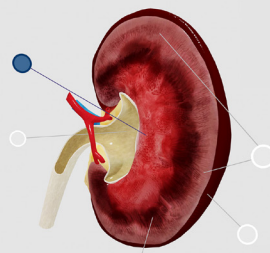
4D Canine Ear Model

With descriptive labels and the ability to zoom and rotate the model through different otitis stages, you can show pet owners how the anatomy of a dog's ear influences prognosis and changes with disease progression.



Scan Me

Dechra



1 Healthy Kidney Stage 1 Stage 2 Stage 3 Stage 4

4D Feline Kidney Model

The interactive model supports veterinarians by being able to visually outline the stages and severity of chronic kidney disease, showcasing the degeneration of the feline kidney through striking visuals.



Scan Me